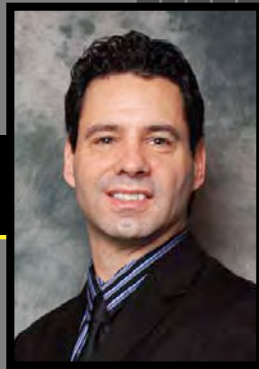


When Precision Matters

“As Owner



of GLASS, I understand the need to provide excellent service at a fair price. This combination makes for a **satisfied customer** and is why all of our customers prefer to use us for any of their future alignment needs.

We are proud that we've had ZERO cases where the customer requested warranty work. And, our rates are typically **25% less** than other premium alignment service companies.

Mike

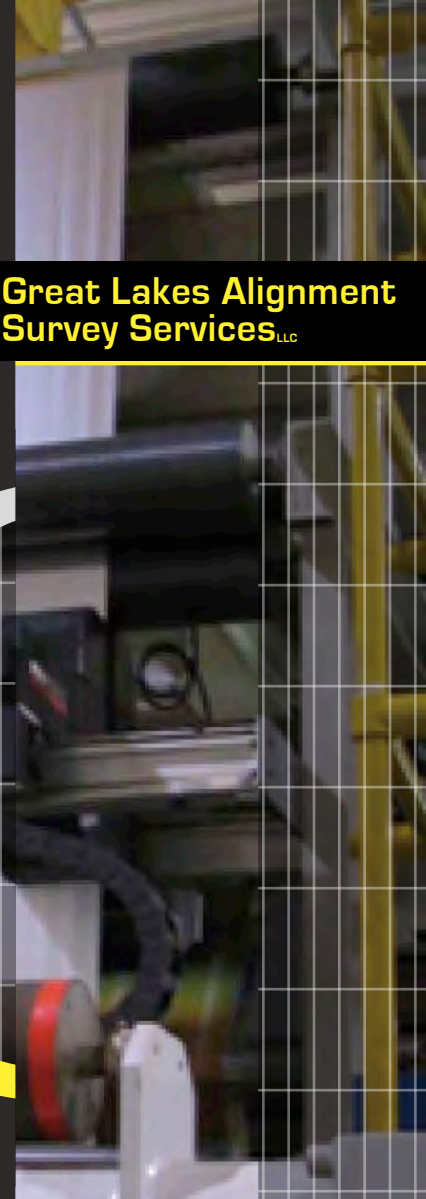
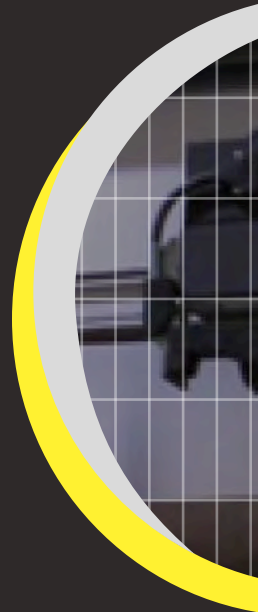
Owner, Mike Peeples



FOLD HERE



Great Lakes Alignment Survey Services^{LLC}



Coater/ Laminator Specialists



GREAT LAKES ALIGNMENT SURVEY SERVICES^{LLC}

W7036 Rimrock Ln.
Greenville, WI 54942
tel. 262-339-7631



- | | |
|------------|-----------|
| Unwinds | Guides |
| Splicers | Ovens |
| Laminators | Rewinds |
| Coaters | Die Heads |

Visit our website for sample reports
www.glassalignment.com

COATER & LAMINATOR SERVICES

Great Lakes Alignment Survey Services^{LLC} provides the required manpower and tooling to perform alignment projects up to and including the realignment of an entire coater/laminator. We have the flexibility of providing turnkey alignment services or we can work with your mechanics to assist them in the alignment of your machine components.

Because of the **reliability**

of their work, we prefer to use GLASS for turnkey installations and recommend them to our own customers.

– David Cuppan
Faustel, Inc.



Our mill has relied on [GLASS] for the past

13 years

and they have always met or **exceeded** our expectations. Mike and his team are always willing to adjust to our conditions...

– Keith Weizenicker

Packaging Corporation
of America

GLASS
GREAT LAKES ALIGNMENT
SURVEY SERVICES

PRECISION IS KEY

ALIGNMENT INSPECTION SETUP

Prior to beginning any alignment for component replacements, adjustments or new line installations, GLASS teams perform the following steps crucial to establishing and maintaining a properly aligned coater or laminator:

- Verify or establish a precise overall machine centerline
- Install or verify a permanent offset alignment baseline reference
- Determine the alignment of major components for existing equipment

BENEFITS

- Improved web tracking
- Tension control
- Uniform coating
- Improve laminate bonding
- Extend bearing and coupling life
- Increased production efficiency
- Reduce vibration
- Reduce waste

OPTICAL ALIGNMENT FOR COATERS/LAMINATORS

Precision placement and alignment of components is critical to a quality product. GLASS teams provide optical and laser alignment measurement and analysis to direct your mechanics or a GLASS team in the maintenance, repair, replacement or installation of a coater/laminator.

Turnkey Mechanical Alignment

GLASS provides project planning, manpower, tooling and equipment needed to perform component alignment up to the full installation of a coater/laminator line.

Documentation

Every GLASS service call is documented in a report that provides a complete evaluation of the inspection or alignment work performed. This evaluation includes a summary of the work, documented sketches of original component locations and adjustments, and recommendations for further work to address alignment issues.