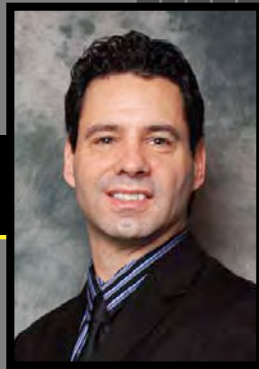


When Precision Matters

As Owner



of GLASS, I understand the need to provide excellent service at a fair price. This combination makes for a **satisfied customer** and is why all of our customers prefer to use us for any of their future alignment needs.

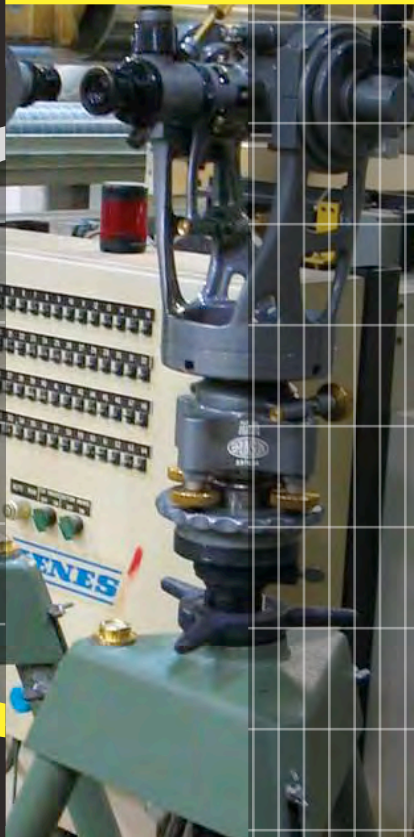
We are proud that we've had ZERO cases where the customer requested warranty work. And, our rates are typically **25% less** than other premium alignment service companies.

Mike

Owner, Mike Peeples



Great Lakes Alignment Survey Services LLC



NEW MACHINERY

Installation & Alignment

We've made our name in tight tolerances!



GREAT LAKES ALIGNMENT SURVEY SERVICES LLC

W7036 Rimrock Ln.
Greenville, WI 54942
tel. 262-339-7631



Visit our website for sample reports
www.glassalignment.com

FOLD HERE

NEW MACHINERY INSTALLATION & ALIGNMENT

Great Lakes Alignment Survey Services... specializes in the alignment of new machinery. It is essential with the installation of any new machine that proper layout and alignment be performed. Every machine manufacturer insists that the machine be properly aligned when it is installed.

Because of the **reliability**

of their work, we prefer to use GLASS for turnkey installations and recommend them to our own customers.

– David Cuppan
Faustel, Inc.



Our mill has relied on [GLASS] for the past

13 years

and they have always met or **exceeded** our expectations. Mike and his team are always willing to adjust to our conditions...

– Keith Weizenicker

Packaging Corporation
of America

GLASS
GREAT LAKES ALIGNMENT
SURVEY SERVICES

PRECISION IS KEY

Using highly precise alignment equipment, we can align your new machine to a tolerance of ± 0.001 ".

From beginning to end, we perform the layout work to locate where the machine components will rest, all the way to the final alignment of the machine. Proper alignment includes the following:

- Perform an Industrial Survey of your facility to determine the exact machine location and placement of floor-alignment monuments.
- Establish foundation layouts with utilities using conventional optical alignment or 3-D methods.
- Establish Machine Axis [centerline] and Baseline [control lines]. Then place monuments in the floor along both lines for future reference.
- Establish the machine-line footprint or sole-plate layout using manufacturers' CAD dxf/dwg coordinates.
- Optically align and level the machine sections as they are set into place on the footprint.

GLASS PERFORMS WORK GLOBALLY

GLASS has been providing alignment services Globally since 2004. Specifically, we specialize in the alignment of new machinery throughout China and Singapore. We are willing to travel to where your project is located, regardless of location. We can work with your local mechanical support staff or we can provide a turnkey alignment of the new machinery.

Documentation

Documentation of alignment at the end of the machine's installation is essential. You will receive a detailed report on the alignment of the machine as well as location of the monuments.